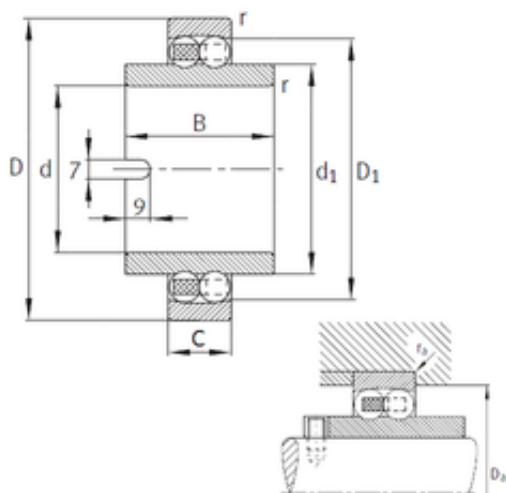




BEARING PRECISION AXLE CORP.



55 mm x 100 mm x 60 mm FAG 11211-TVH Self Aligning Ball Bearings

Bearing No. 11211-TVH

Size	55x100x60 mm
Bore Diameter	55 mm
Outer Diameter	100 mm
Width	60 mm
d	55 mm
D	100 mm
B	60 mm
C	21 mm
d1	69,5 mm
r min.	1,5 mm
D1	86,9 mm
Da max.	91 mm
ra max.	1,5 mm
Weight	1,13 Kg
Basic dynamic load rating (C)	27 kN
Basic static load rating (C0)	9,9 kN
Fatigue load limit (Pu)	620
Limiting speed	5 000 r/min
Calculation factor (e)	0,19
Calculation factor (Y0)	3,47
Calculation factor (Y1)	3,31

11211-TVH Bearing 2D drawings and 3D CAD models