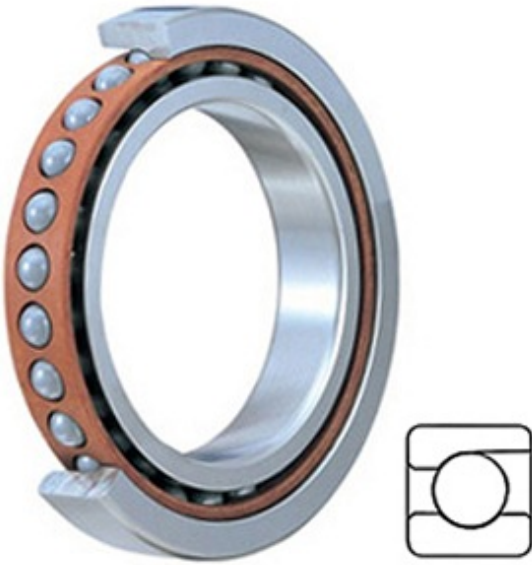




BEARING PRECISION AXLE CORP.



71924 CDGB/P4A Bearing 2D drawings and 3D CAD models

4.724 Inch | 120 Millimeter x 6.496 Inch | 165 Millimeter x 0.866 Inch | 22 Millimeter SKF 71924 CDGB/P4A Precision Ball Bearings

Bearing No. 71924 CDGB/P4A

Category	Precision Ball Bearings
Inventory	0.0
Manufacturer Name	SKF
Minimum Buy Quantity	N/A
Weight	0
Product Group	B04270
Enclosure	Open
Precision Class	ABEC 7 ISO P4
Material - Ball	Steel
Number of Bearings	1 (Single)
Contact Angle	15 Degree
Preload	Light
Raceway Style	1 Rib Outer Ring
Cage Material	Phenolic
Rolling Element	Ball Bearing
Mounting Arrangement	Universal
Flush Ground	Yes
Inch - Metric	Metric
Other Features	Single Row Angular Contact High Capacity Basic Design
Long Description	120MM Bore; 165MM Outside Diameter; 22MM Width; Open Enclosure; ABEC 7 ISO P4 Precision; Steel Ball Material; 1 (Single) Bearing; 15 Degree



BEARING PRECISION AXLE CORP.

	Contact Angle; Phenolic Cage Material; 1 Rib Outer Ring Ra
Category	Precision Ball Bearings
UNSPSC	31171531
Harmonized Tariff Code	8482.10.50.28
Noun	Bearing
Keyword String	Ball Angular Contact
Manufacturer URL	http://www.skf.com
d	4.724 Inch 120 Millimeter
D	6.496 Inch 165 Millimeter
B	0.866 Inch 22 Millimeter